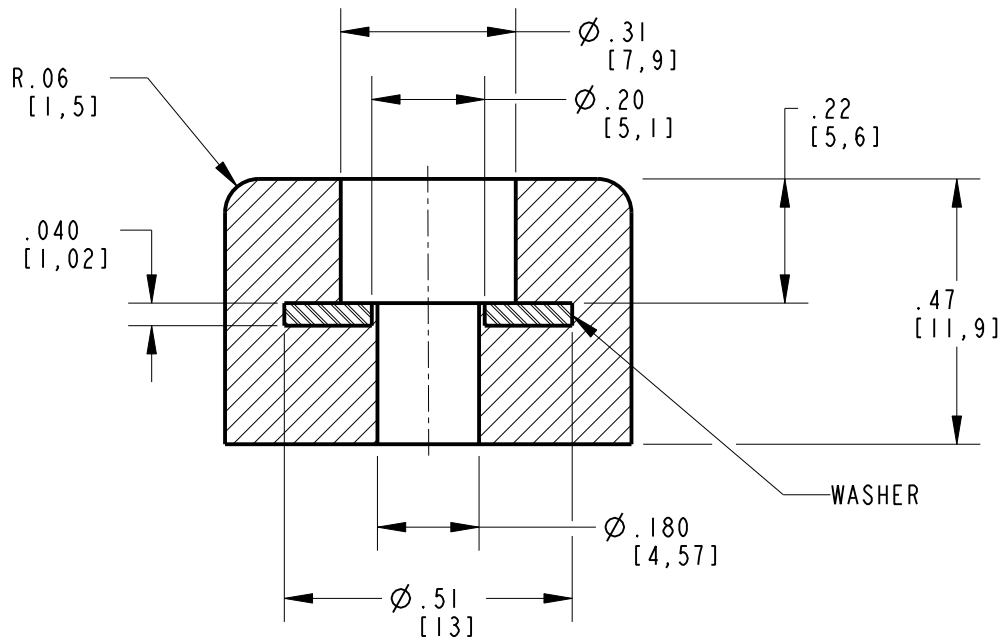
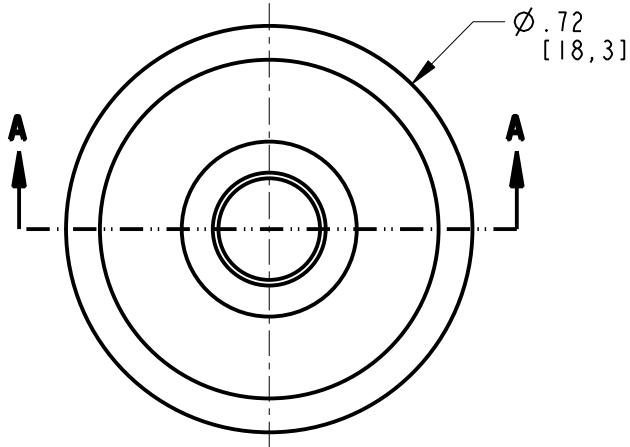


1510

DWG. NO.

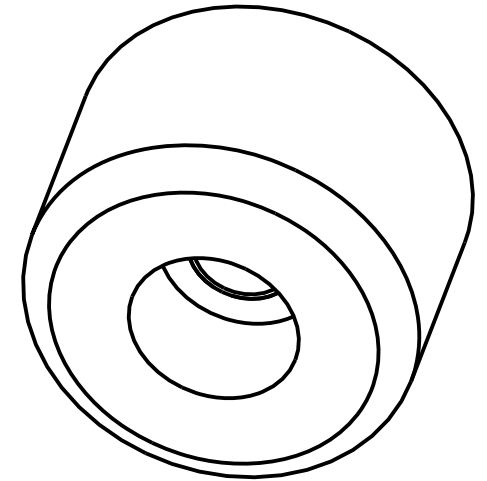


SECTION A-A

NOTES:

1. MATERIAL:
ELASTOMER #5: SBR (STYRENE-BUTADIENE RUBBER) IN ACCORDANCE WITH ASTM D2000
AA X10 A13 B13 C12 F17 K11, WHERE X=REFERENCE DUROMETER TYPE "A", SEE P/N
AND Z-SUFFIX REQUIREMENTS APPLICABLE TO ALL AVAILABLE DUROMETERS OF THIS GRADE.
METAL INSERT: AISI-SAE 1010-1030 STEEL OR EQUIVALENT.
2. PLATING: STEEL INSERTS MUST BE PLATED ZINC AND CLEAR CHROMATE.
3. DIMENSIONING AND TOLERANCING PER ASME Y14.5M-1994 STANDARD.

REV	DATE	CHANGE DESCRIPTION	ENGR
01	03-03-06	INITIAL RELEASE	FA
02	11-30-06	REVISED 3 DIMS.	FA
03	12-13-06	ADDED RADIUS BACK TO GEOMETRY	FA
04	03-20-07	UPDATED FORMAT	EL



SCALE 3.000

ELASTOMER AND COLOR CODE SPECIFICATIONS

PART NO.	ELASTOMER	COLOR CODE	COLOR CODE METHOD
1510-570	5	NONE	N/A



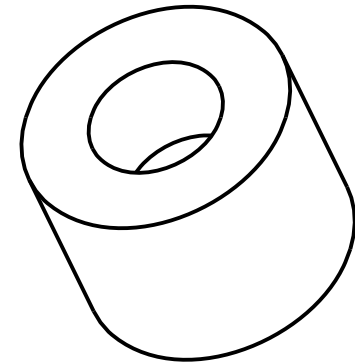
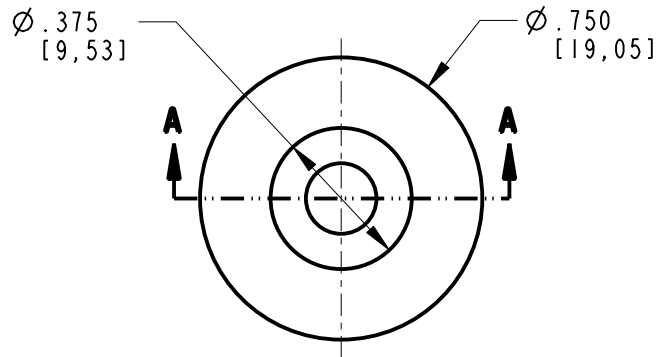
DESIGNED BY: FA	MANUFACTURING DRAWING		
DATE: 03-03-06	DO NOT SCALE THIS DRAWING	THIRD ANGLE PROJECTION	
REV. 04	NOTICE: THIS DRAWING CONTAINS PROPRIETARY INFORMATION AND MAY NOT BE USED FOR ANY OTHER PURPOSE THAN AS AUTHORIZED BY EBEO.		
TITLES	FOOT/BUMPER, RECESSED		
TOLERANCES .XX=±.02 .XXX=±.010 ANG=±1°	DWG NO. 1510	DWG SIZE A	UNITS INCH [MM]
1371 Brummel Ave. Elk Grove Village, IL 60007-2108		SHEET 1 of 1	SCALE 3.000

REV	DATE	CHANGE DESCRIPTION	ENGR
01	04-12-07	INITIAL RELEASE	EL

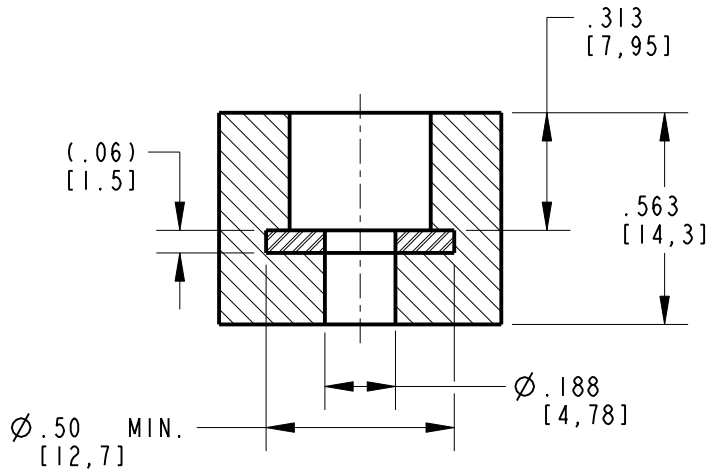
1511

DWG. NO.

B



SCALE 2.000



SECTION A-A

ELASTOMER AND COLOR CODE METHOD

PART NO.	ELASTOMER	COLOR CODE	COLOR CODE METHOD
1511-540	5	NONE	N/A

NOTES:

- MATERIAL:
ELASTOMER #5: SBR (STYRENE BUTADIENE RUBBER) IN ACCORDANCE WITH ASTM D2000. AA X10 A13 B13 C12 F17 K11, WHERE X= REFERENCE DUROMETER TYPE "A", SEE P/N AND Z= SUFFIX REQUIREMENTS APPLICABLE TO ONLY AVAILABLE DUROMETERS OF THIS GRADE.
METAL INSERT: AISI-SAE 1010-1030 STEEL OR EQUIVALENT.
- PLATING: STEEL INSERT MUST BE PLATED ZINC AND CLEAR CHROMATE TO WITHSTAND AT LEAST 96 HOURS OF SALT SPRAY TO RED RUST WHEN TESTED PER ASTM D117
- DIMENSIONING AND TOLERANCING PER ASME Y14.5M-1994 STANDARD.



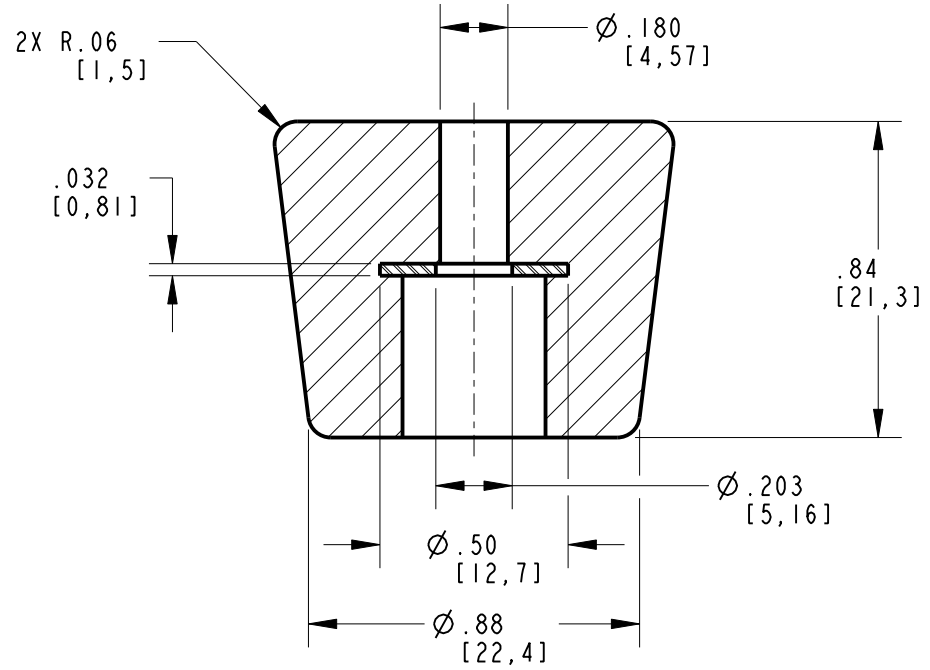
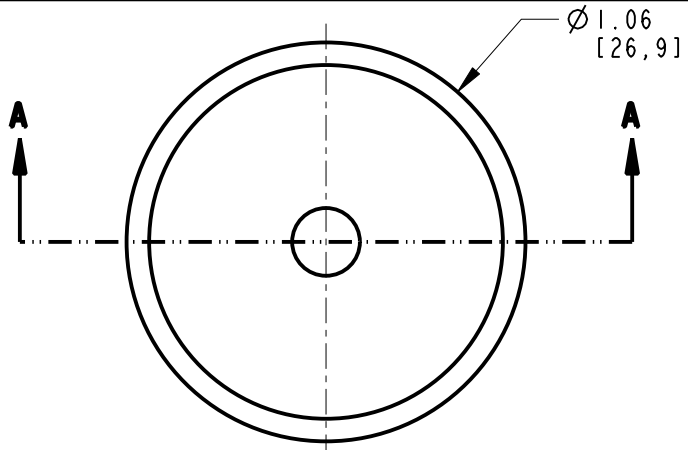
DESIGNED BY: EL	MANUFACTURING DRAWING		
DATE: 04-02-07	DO NOT SCALE THIS DRAWING	THIRD ANGLE PROJECTION	
REV. 01	NOTICE: THIS DRAWING CONTAINS PROPRIETARY INFORMATION AND MAY NOT BE USED FOR ANY OTHER PURPOSE THAN AS AUTHORIZED BY EBCO.		
TITLES: FOOT/BUMPER, RECESSED	DWG. NO. 1511	DWG. SIZE A	UNITS INCH [MM]
TOLERANCES .XX=±.02 .XXX=±.010 ANG=±1°	SHEET 1 of 1	SCALE 2.000	

B

A

1520

DWG. NO.

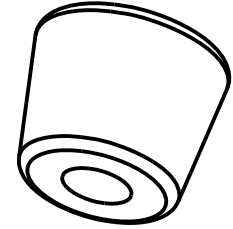


SECTION A-A

NOTES:

- MATERIAL:
ELASTOMER: RUBBER SYNTHETIC, 2AA610 C12 F17 PER ASTM D2000.
METAL INSERT: CARBON STEEL, COMMERCIAL, TYPE B, OILED, PER ASTM A1008.
- PLATING: STEEL INSERT MUST BE ELECTROPLATED WITH ZINC/TIN ALLOY AS FOLLOWS.
60-80% TIN AND 20-40% ZINC BY WEIGHT%. MINIMUM PLATING THICKNESS 0.0002" (5 MICROMETERS).
CHROMATE: HEXAVALENT CHROMIUM FREE AND IRIDESCENT GREEN COLOR.
SALT SPRAY: 72 HOURS MIN. TO WHITE AND 288 HOURS MIN. TO RED CORROSION WHEN TESTED PER ASTM B117.
- PLATING ADHESION: MUST COFORM TO THE FOLLOWING REQUIREMENTS WHEN TESTED PER ASTM B 571
GRIND-SAW TEST: NO LIFTING OR PEELING OF THE ELECTROPLATE FROM THE SUBSTRATE IS PERMITTED FOLLOWING THE GRIND-SAW TEST.
BURNISHING TEST: NO BLISTERING, LIFTING OR PEELING OF THE ELECTROPLATE FROM THE SUBSTRATE IS PERMITTED FOLLOWING THE BURNISHING TEST.
- SECONDARY DIMENSIONS IN [] ARE IN MILLIMETERS.
- DIMENSIONING AND TOLERANCING PER ASME Y14.5M-1994 STANDARD.

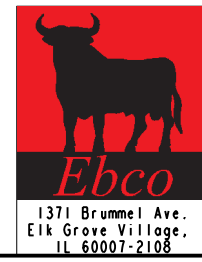
REV	DATE	CHANGE DESCRIPTION	ENGR
01	11-03-04	INITIAL RELEASE	FA
02	03-14-06	UPDATED NOTES 1, 2 AND 3	FA
03	04-03-06	REMOVED MOLD IN INFO NOTE, MODIFIED MATERIAL AND PLATING REQUIREMENTS, SEE NOTES 1, 2, & 3	FA
04	10-15-07	UPDATED FORMAT	EL



SCALE 1.000

ELASTOMER AND COLOR CODE SPECIFICATIONS

PART NO.	ELASTOMER	COLOR CODE	COLOR CODE METHOD
1520-160	I	NONE	N/A



DESIGNED BY: FA
DATE: 11-03-04
REV: 04
TITLE: FOOT/BUMPER, RECESSED

MANUFACTURING DRAWING

DO NOT SCALE THIS DRAWING
THIRD ANGLE PROJECTION

NOTICE: THIS DRAWING CONTAINS PROPRIETARY INFORMATION AND MAY NOT BE USED FOR ANY OTHER PURPOSE THAN AS AUTHORIZED BY EBEO.

TOLERANCES
.XX=±.02
.XXX=±.010
ANG=±1°

DWG NO. 1520

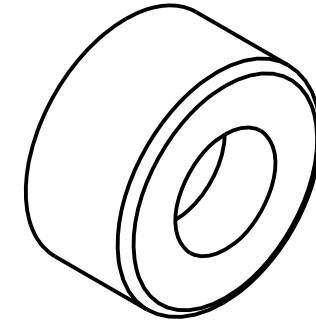
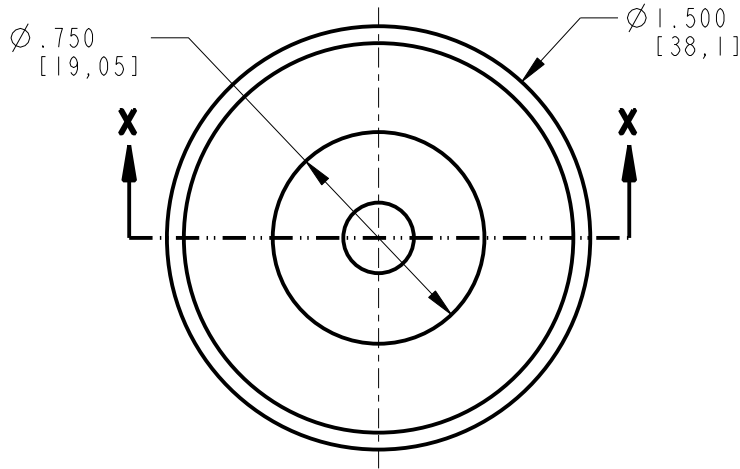
DWG SIZE A
UNITS INCH [MM]

SHEET 1 of 1
SCALE 2.000

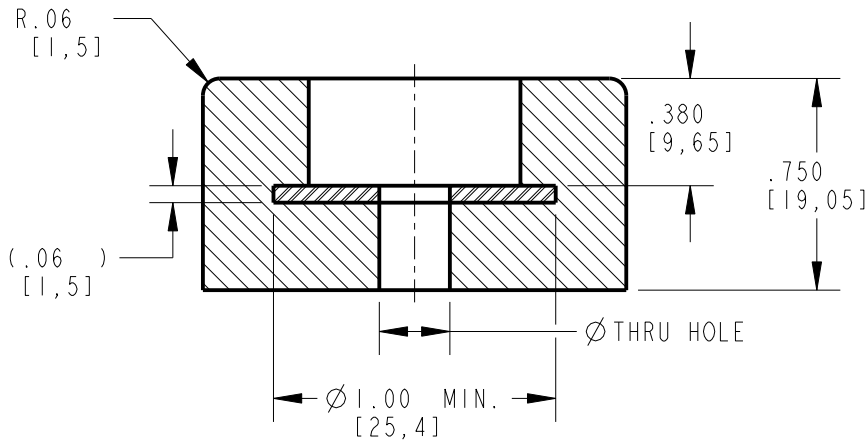
1560

DWG. NO.

REV	DATE	CHANGE DESCRIPTION	ENGR
01	04-12-07	INITIAL RELEASE	EL



SCALE 1.000



SECTION X-X

ELASTOMER AND COLOR CODE SPECIFICATIONS

PART NO.	ELASTOMER	COLOR CODE	COLOR CODE METHOD	Ø THRU HOLE
1560-060	0	NONE	N/A	.250 [6.35]
1560-160	1	NONE	N/A	.250 [6.35]
1560-560	5	NONE	N/A	.250 [6.35]
1560-560-S	5	NONE	N/A	.320 [8.12]
1560-575	5	NONE	N/A	.250 [6.35]
1560-590	5	NONE	N/A	.250 [6.35]

NOTES:

- MATERIAL:
 - ELASTOMER #0: NEOPRENE IN ACCORDANCE WITH ASTM D2000. 3 BC X14 A14 B14 C12 F17 K11 Z, WHERE X= REFERENCE DUROMETER TYPE "A", SEE P/N AND Z= SUFFIX REQUIREMENTS APPLICABLE TO ONLY AVAILABLE DUROMETERS OF THIS GRADE.
 - ELASTOMER #1: NATURAL RUBBER IN ACCORDANCE WITH ASTM D2000. 3 AA X14 A13 B13 C12 F17 K11 Z, WHERE X=REFERENCE DUROMETER TYPE "A", SEE P/N AND Z=SUFFIX REQUIREMENTS APPLICABLE TO ONLY AVAILABLE DUROMETERS OF THIS GRADE.
 - ELASTOMER #5: SBR (STYRENE-BUTADIENE RUBBER) IN ACCORDANCE WITH ASTM D2000 AA X10 A13 B13 C12 F17 K11, WHERE X=REFERENCE DUROMETER TYPE "A", SEE P/N AND Z=SUFFIX REQUIREMENTS APPLICABLE TO ONLY AVAILABLE DUROMETERS OF THIS GRADE.
 - METAL INSERT: AISI-SAE 1010-1030 STEEL OR EQUIVALENT.
- PLATING: STEEL INSERT MUST BE PLATED ZINC AND CLEAR CHROMATE TO WITHSTAND AT LEAST 96 HOURS OF SALT SPRAY TO RED RUST WHEN TESTED PER ASTM D117.
- DIMENSIONING AND TOLERANCING PER ASME Y14.5M-1994 STANDARD.



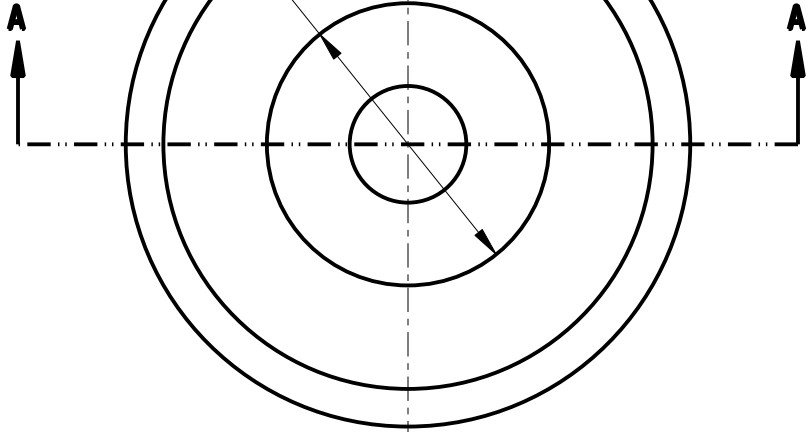
DESIGNED BY: EL	MANUFACTURING DRAWING	
DATE: 03-20-07	DO NOT SCALE THIS DRAWING	THIRD ANGLE PROJECTION
REV. 01	NOTICE: THIS DRAWING CONTAINS PROPRIETARY INFORMATION AND MAY NOT BE USED FOR ANY OTHER PURPOSE THAN AS AUTHORIZED BY EBEO.	
TITLE: BUMPER, RECESSED	DWG NO. 1560	UNITS INCH [MM]
TOLERANCES .XX=±.02 .XXX=±.010 ANG=±1°	SHEET 1 of 1	SCALE 1.500

1570

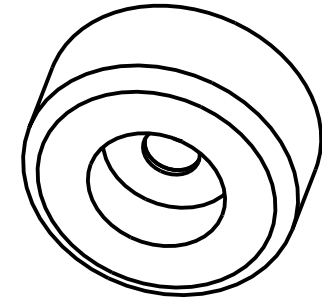
DWG. NO.

$\phi .750 \pm .015$
[19,05 ± 0,38]

$\phi 1.500 \pm .015$
[38,1 ± 0,38]



REV	DATE	CHANGE DESCRIPTION	ENGR
01	11-03-04	INITIAL RELEASE	FA
02	04-12-07	UPDATED FORMAT	EL
03	05-05-08	ADDED P/N -560	EL
04	10-01-08	REVISED METAL PLATING SPEC.	EL



SCALE 1.000

R.10
[2,5]

.34
[8,6]

(.04)
[1]

$.290 \pm .015$
[7,37 ± 0,38]

$.630 \pm .015$
[16 ± 0,38]

$\phi .310 \pm .010$
[7,87 ± 0,25]

$\phi 1.00$ MIN.
[25,4]

SECTION A-A

ELASTOMER AND COLOR CODE SPECIFICATIONS

PART NO.	ELASTOMER	COLOR CODE	COLOR CODE METHOD
1570-165	1	NONE	N/A
1570-350	3	NONE	N/A
1570-560	5	NONE	N/A

NOTES:

- MATERIAL:
 - ELASTOMER #1: NATURAL RUBBER IN ACCORDANCE WITH ASTM D2000.
 - 3 AA X14 A13 B13 C12 F17 K11 Z, WHERE X=REFERENCE DUROMETER TYPE "A", SEE P/N AND Z=SUFFIX REQUIREMENTS APPLICABLE TO ONLY AVAILABLE DUROMETERS OF THIS GRADE.
 - ELASTOMER #3: BUNA-N IN ACCORDANCE WITH ASTM D2000.
 - 2 BG X10 A14 B14 C12 F17 Z, WHERE X=REFERENCE DUROMETER TYPE "A", SEE P/N AND Z=SUFFIX REQUIREMENTS APPLICABLE TO ONLY AVAILABLE DUROMETERS OF THIS GRADE.
 - ELASTOMER #5: SBR IN ACCORDANCE WITH ASTM D2000.
 - 3 AA X10 A13 B13 C12 F17 Z, WHERE X=REFERENCE DUROMETER TYPE "A", SEE P/N AND Z=SUFFIX REQUIREMENTS APPLICABLE TO ONLY AVAILABLE DUROMETERS OF THIS GRADE.
 - METAL INSERT: AISI-SAE 1010-1030 STEEL OR EQUIVALENT.
- PLATING: STEEL INSERTS MUST BE PLATED ZINC AND CLEAR CHROMATE TO WITHSTAND AT LEAST 96 HOURS OF SALT SPRAY TO RED RUST WHEN TESTED PER ASTM D117. CHROMATE MUST BE HEXAVALENT FREE AND TRIVALENT BASED TO BE ROHS COMPLIANT.
- DIMENSIONING AND TOLERANCING PER ASME Y14.5M-1994 STANDARD.

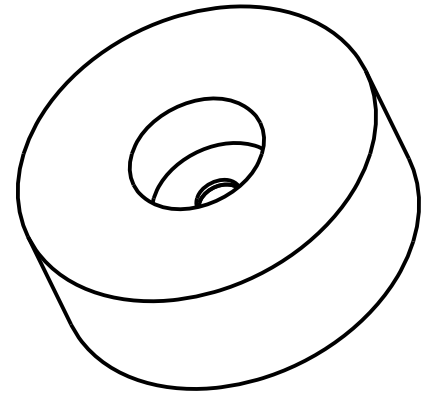
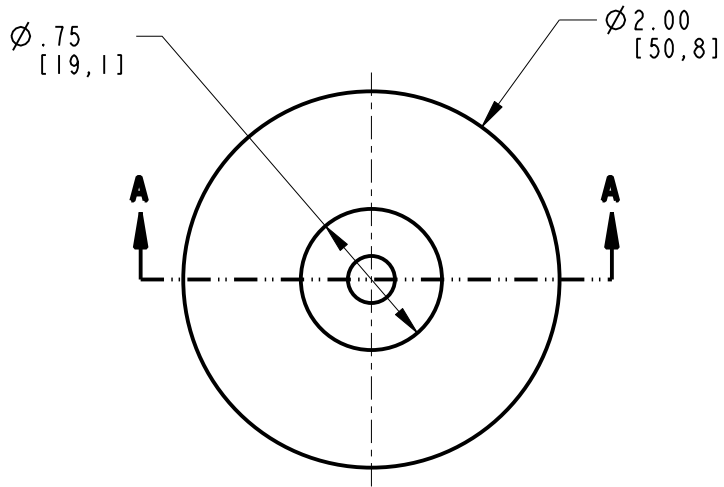


DESIGNED BY: FA	MANUFACTURING DRAWING	
DATE: 11.03-04	DO NOT SCALE THIS DRAWING	THIRD ANGLE PROJECTION
REV. 04	NOTICE: THIS DRAWING CONTAINS PROPRIETARY INFORMATION AND MAY NOT BE USED FOR ANY OTHER PURPOSE THAN AS AUTHORIZED BY EBCO.	
TITLE: FOOT/BUMPER, RECESSED		
TOLERANCES .XX ± .02 .XXX ± .010 ANG ± 1°	DWG. NO. 1570	DWG. SIZE A INCH [MM]
SHEET 1 of 1		SCALE 2.000

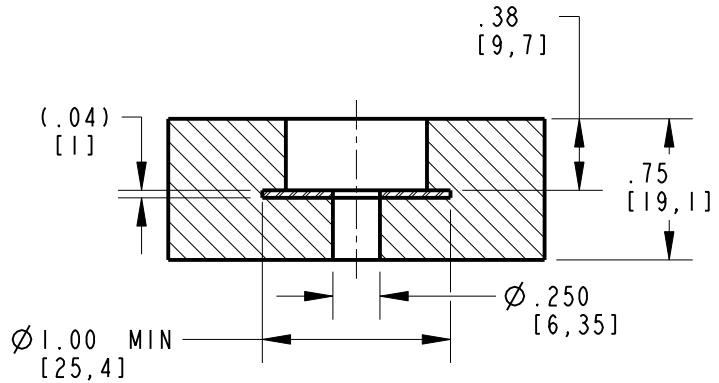
1580

DWG. NO.

REV	DATE	CHANGE DESCRIPTION	ENGR
01	04-12-07	INITIAL RELEASE	EL



SCALE 1.000



SECTION A-A

ELASTOMER AND COLOR CODE SPECIFICATIONS

PART NO.	ELASTOMER	COLOR CODE	COLOR CODE METHOD
1580-560	5	NONE	N/A

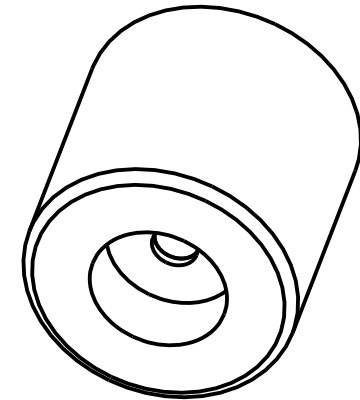
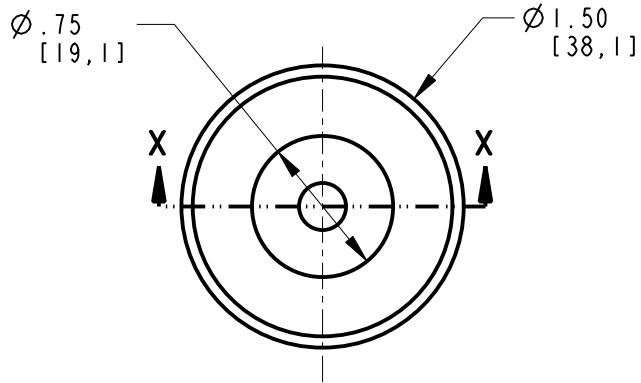
- NOTES:
- MATERIAL:
ELASTOMER #5: SBR (STYRENE-BUTADIENE RUBBER) IN ACCORDANCE WITH ASTM D2000. AA X10 A13 B13 C12 F17 K11, WHERE X= REFERENCE DUROMETER TYPE "A". SEE P/N AND Z= SUFFIX REQUIREMENTS APPLICABLE TO ONLY AVAILABLE DUROMETERS OF THIS GRADE.
METAL INSERT: AISI-SAE 1010-1030 STEEL OR EQUIVALENT.
 - PLATING: STEEL INSERT MUST BE PLATED ZINC AND CLEAR CHROMATE TO WITHSTAND AT LEAST 96 HOURS OF SALT SPRAY TO RED RUST WHEN TESTED PER ASTM D117
 - DIMENSIONING AND TOLERANCING PER ASME Y14.5M-1994 STANDARD.



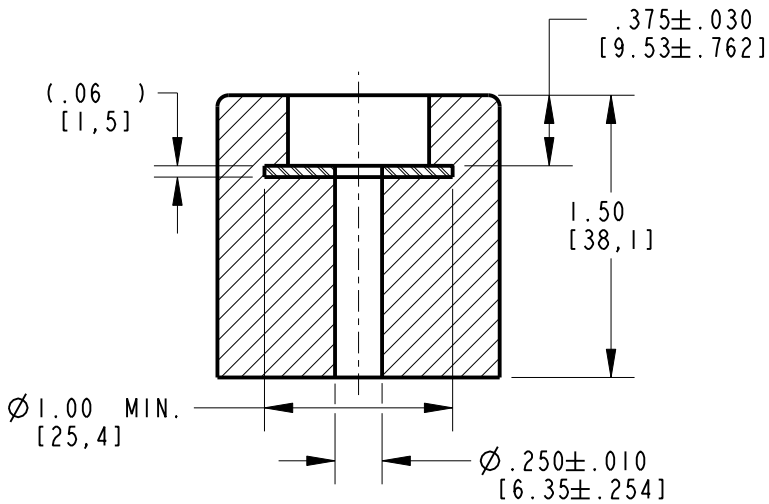
DESIGNED BY: EL	MANUFACTURING DRAWING		
DATE: 04-02-07	DO NOT SCALE THIS DRAWING	THIRD ANGLE PROJECTION	
REV. 01	NOTICE: THIS DRAWING CONTAINS PROPRIETARY INFORMATION AND MAY NOT BE USED FOR ANY OTHER PURPOSE THAN AS AUTHORIZED BY EBCO.		
TITLE: FOOT/BUMPER, RECESSED	DWG NO. 1580	DWG SIZE A	UNITS INCH [MM]
TOLERANCES .XX=±.02 .XXX=±.010 ANG=±1°	SHEET 1 of 1	SCALE 1.000	

REV	DATE	CHANGE DESCRIPTION	ENGR
01	04-12-07	INITIAL RELEASE	EL

1600



SCALE 1.000



SECTION X-X

ELASTOMER AND COLOR CODE SPECIFICATIONS

PART NO.	ELASTOMER	COLOR CODE	COLOR CODE METHOD
1600-350	3	NONE	N/A
1600-370	3	NONE	N/A

NOTES:

- MATERIAL:
ELASTOMER #3: BUNA-N IN ACCORDANCE WITH ASTM D2000.
2 BG X10 A14 B14 C12 F17, WHERE X= REFERENCE DUROMETER TYPE "A", SEE P/N
AND Z= SUFFIX REQUIREMENTS APPLICABLE TO ONLY AVAILABLE DUROMETERS OF THIS GRADE.
METAL INSERT: AISI-SAE 1010-1030 STEEL OR EQUIVALENT.
- PLATING: STEEL INSERTS MUST BE PLATED ZINC AND CLEAR CHROMATE TO WITHSTAND AT LEAST 96 HOURS OF SALT SPRAY TO RED RUST WHEN TESTED PER ASTM D117
- DIMENSIONING AND TOLERANCING PER ASME Y14.5M-1994 STANDARD.



DESIGNED BY: EL	MANUFACTURING DRAWING		
DATE: 04-02-07	DO NOT SCALE THIS DRAWING	THIRD ANGLE PROJECTION	
REV. 01	NOTICE: THIS DRAWING CONTAINS PROPRIETARY INFORMATION AND MAY NOT BE USED FOR ANY OTHER PURPOSE THAN AS AUTHORIZED BY EBCO.		
TITLE: FOOT/BUMPER, RECESSED	DWG NO. 1600	DWG SIZE A	UNITS INCH [MM]
TOLERANCES .XX=±.02 .XXX=±.010 ANG=±1°	SHEET 1 of 1	SCALE 1.000	

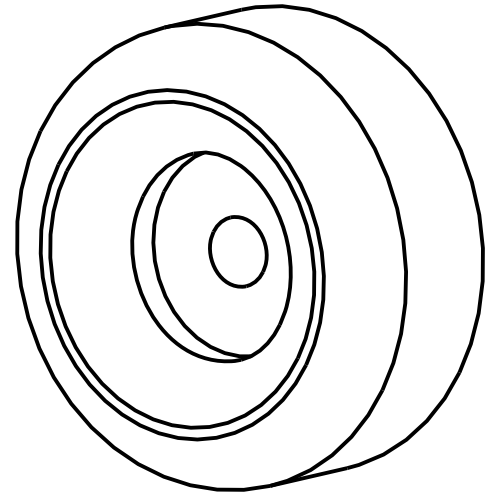
REV	DATE	CHANGE DESCRIPTION	ENGR
01	07-09-98	INITIAL RELEASE	SEL
02	05-23-07	UPDATED FORMAT	EL

1650

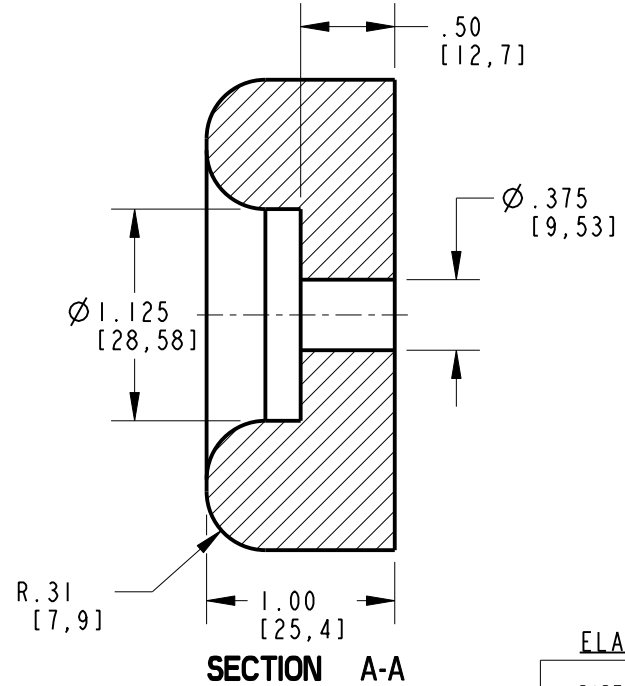
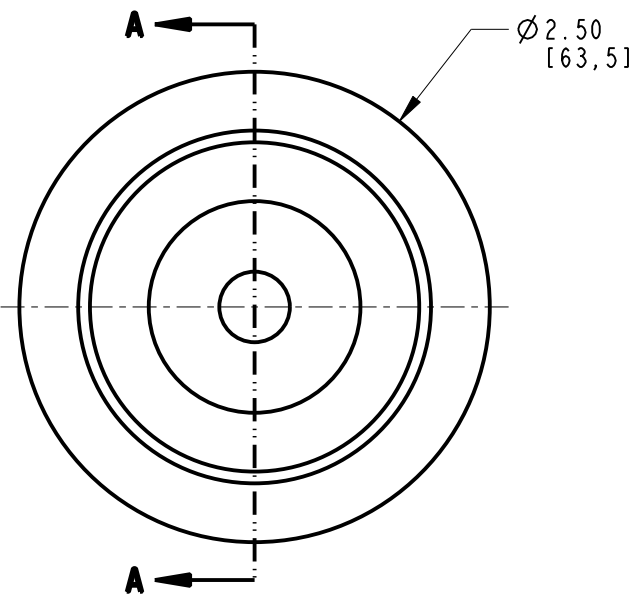
DWG. NO.

B

B



SCALE 1.0



SECTION A-A

ELASTOMER AND COLOR CODE SPECIFICATIONS

PART NO.	ELASTOMER	COLOR CODE	COLOR CODE METHOD
1650-560	5	NONE	N/A

A

A

NOTES:

- MATERIAL:
ELASTOMER #5: SBR IN ACCORDANCE WITH ASTM D2000.
AA X10 A13 B13 C12 F17 K11, WHERE X= REFERENCE DUROMETER TYPE "A", SEE P/N
- DIMENSIONING AND TOLERANCING PER ASME Y14.5M-1994 STANDARD.



DESIGNED BY: SEL	MANUFACTURING DRAWING		
DATE: 07-09-98	DO NOT SCALE THIS DRAWING	THIRD ANGLE PROJECTION	
REV. 02	NOTICE: THIS DRAWING CONTAINS PROPRIETARY INFORMATION AND MAY NOT BE USED FOR ANY OTHER PURPOSE THAN AS AUTHORIZED BY EBEO.		
TITLE: BUMPER	DWG NO. 1650	DWG SIZE A	UNITS INCH [MM]
TOLERANCES .XX=±.02 .XXX=±.010 ANG=±1°	SHEET 1 of 1	SCALE 1.000	

1371 Brummel Ave.
Elk Grove Village,
IL 60007-2108