

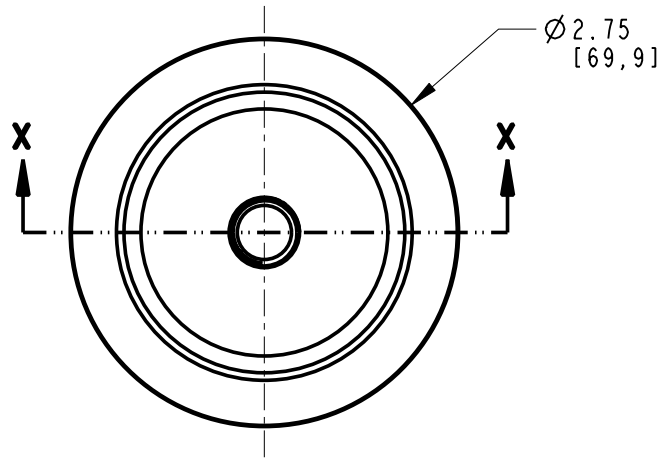
2

1

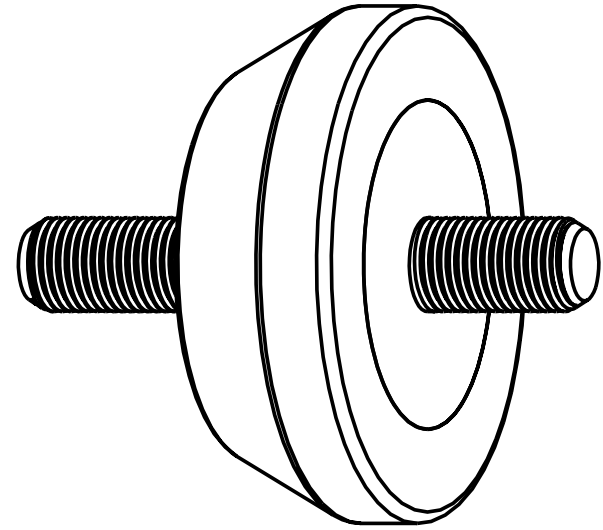
3500

DWG NO.

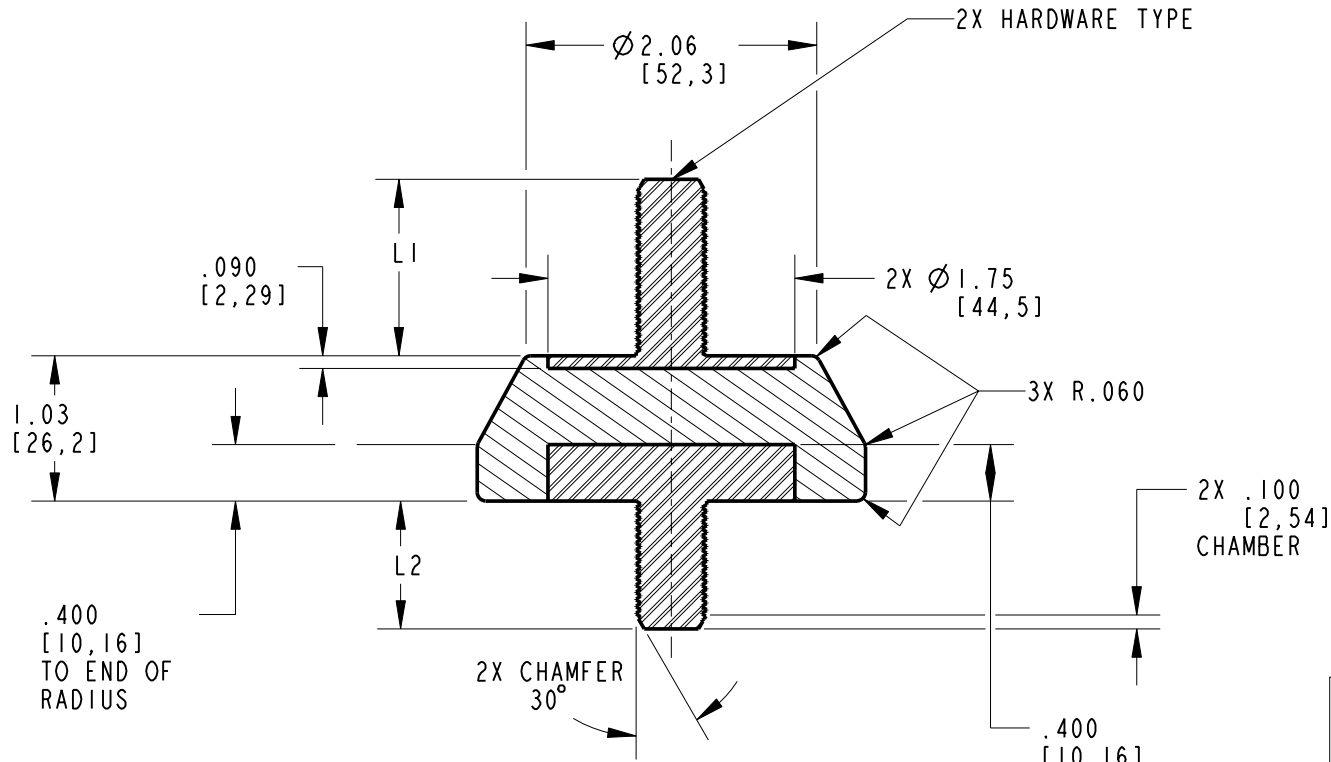
B



REV	DATE	CHANGE DESCRIPTION	ENGR
01	06-10-03	INITIAL RELEASE	FA
02	03-31-05	UPDATED DRAWING/VIEWS	FA
03	01-20-06	UPDATED DRAWING, SEE REV02 FOR CHANGES	FA
04	01-30-06	CORRECTED WASHER THICKNESS .400	FA
05	03-08-07	UPDATED FORMAT	EL



SCALE 1.000



SECTION X-X

.400 [10,16] TO END OF RADIUS

A

2

1

DESIGNED BY: FA	MANUFACTURING DRAWING	
	DATE: 06-10-03	DO NOT SCALE THIS DRAWING
REV. 05	THIRD ANGLE PROJECTION	
NOTICE: THIS DRAWING CONTAINS PROPRIETARY INFORMATION AND MAY NOT BE USED FOR ANY OTHER PURPOSE THAN AS AUTHORIZED BY EBCO.		
TITLE: TAPERED CYLINDRICAL MOUNT		
TOLERANCES .XX:±.02 .XXX:±.010 ANG:±1°	DWG NO. 3500	DWG SIZE A
1371 Brummel Ave. Elk Grove Village, IL 60007-2108		UNITS INCH [MM] SCALE 1 of 2 0.750

B

A

3500

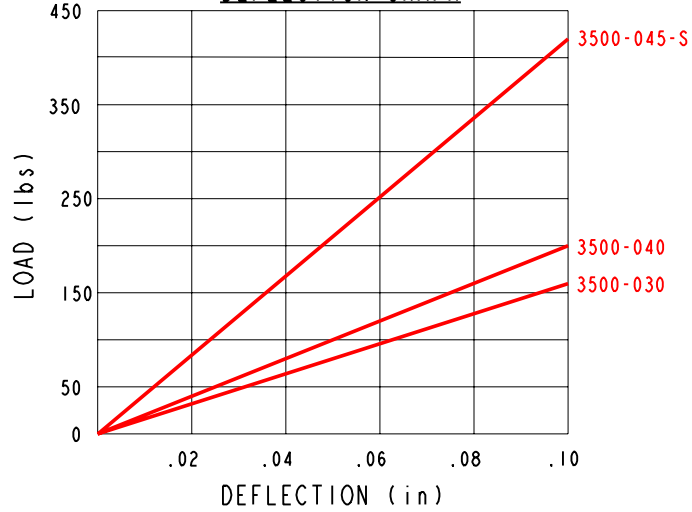
DWG NO.

COMPRESSION SPECIFICATIONS

PART NO.	K VALUE (lbs/in)	MAX. RECOMMENDED DEFLECTION (in)	LOAD @ MAX. DEFLECTION (lbs)
3500-030	1600	0.10	160
3500-040	2000	0.10	200
3500-045-S	4200	0.10	420
3500-160	XXXX	XXX	XXX

REV	DATE	CHANGE DESCRIPTION	ENGR
01	06-10-03	INITIAL RELEASE	FA
02	03-31-05	UPDATED DRAWING/VIEWS	FA
03	01-20-06	UPDATED DRAWING, SEE REV02 FOR CHANGES	FA
04	01-30-06	CORRECTED WASHER THICKNESS .400	FA
05	03-08-07	UPDATED FORMAT	EL

DEFLECTION GRAPH



HARDWARE, ELASTOMER AND COLOR CODE SPECIFICATIONS

PART NO.	HARDWARE TYPE	STUD LENGTH		ELASTOMER	COLOR CODE	COLOR CODE METHOD
		L1 (in)	L2 (in)			
3500-030-R9	M12X1.5-6g	1.250	1.250	0	NONE	N/A
3500-040-J9	1/2-13 UNC-2A	1.250	1.250	0	NONE	N/A
3500-040-K7	1/2-20 UNF-2A	0.875	0.875	0	NONE	N/A
3500-040-R9	M12X1.5-6g	1.250	1.250	0	NONE	N/A
3500-045-K9S	1/2-20 UNF-2A	1.25	0.906±0.020	0	NONE	N/A
3500-160-US	M12X1.75-6g	0.690	0.690	1	NONE	N/A

ADHESION STRENGTH: PART MUST WITHSTAND SPECIFIED PULL FORCE MIN.

PART NO.	lbs
3500-030-R9	650
3500-040-J9	650
3500-040-K7	650
3500-040-R9	650
3500-045-K9S	650
3500-160-US	785

NOTES:

- MATERIAL:
 - ELASTOMER #0: NEOPRENE IN ACCORDANCE WITH ASTM D2000.
 - 3 BC X14 A14 B14 C12 F17 K11 Z, WHERE X= REFERENCE DUROMETER TYPE "A", SEE P/N AND Z= SUFFIX REQUIREMENTS APPLICABLE TO ONLY AVAILABLE DUROMETERS OF THIS GRADE.
 - ELASTOMER #1: NATURAL RUBBER IN ACCORDANCE WITH ASTM D2000.
 - 3 AA X14 A13 B13 C12 F17 K11 Z, WHERE X=REFERENCE DUROMETER TYPE "A", SEE P/N AND Z=SUFFIX REQUIREMENTS APPLICABLE TO ONLY AVAILABLE DUROMETERS OF THIS GRADE.
 - METAL INSERT: AISI-SAE 1010-1030 STEEL OR EQUIVALENT.
- PLATING: STEEL INSERTS MUST BE PLATED ZINC 0.0003" THICK MIN AND YELLOW DICHROMATE TO WITHSTAND AT LEAST 96 HOURS OF SALT SPRAY TO RED RUST WHEN TESTED PER ASTM D117. ALL DIMENSIONS APPLY AFTER PLATING OR TO FINISHED PART.
- DIMENSIONING AND TOLERANCING PER ASME Y14.5M-1994 STANDARD.

1371 Brummel Ave. Elk Grove Village, IL 60007-2108	DESIGNED BY: FA	MANUFACTURING DRAWING	
	DATE: 06-10-03	DO NOT SCALE THIS DRAWING	THIRD ANGLE PROJECTION
	REV. 05	NOTICE: THIS DRAWING CONTAINS PROPRIETARY INFORMATION AND MAY NOT BE USED FOR ANY OTHER PURPOSE THAN AS AUTHORIZED BY EBCC.	
	TITLE: TAPERED CYLINDRICAL MOUNT		
TOLERANCES .XX:±.02 .XXX:±.010 ANG:±1°	DWG NO. 3500	DWG SIZE A	UNITS INCH [MM]
		SHEET 2 of 2	SCALE 0.750