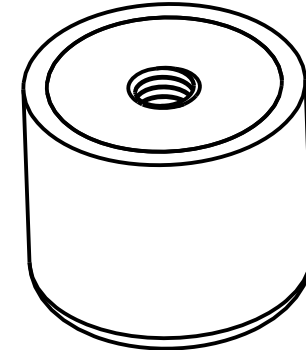
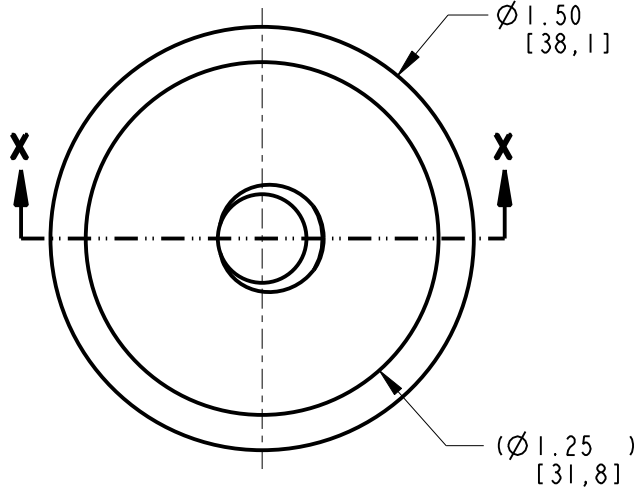


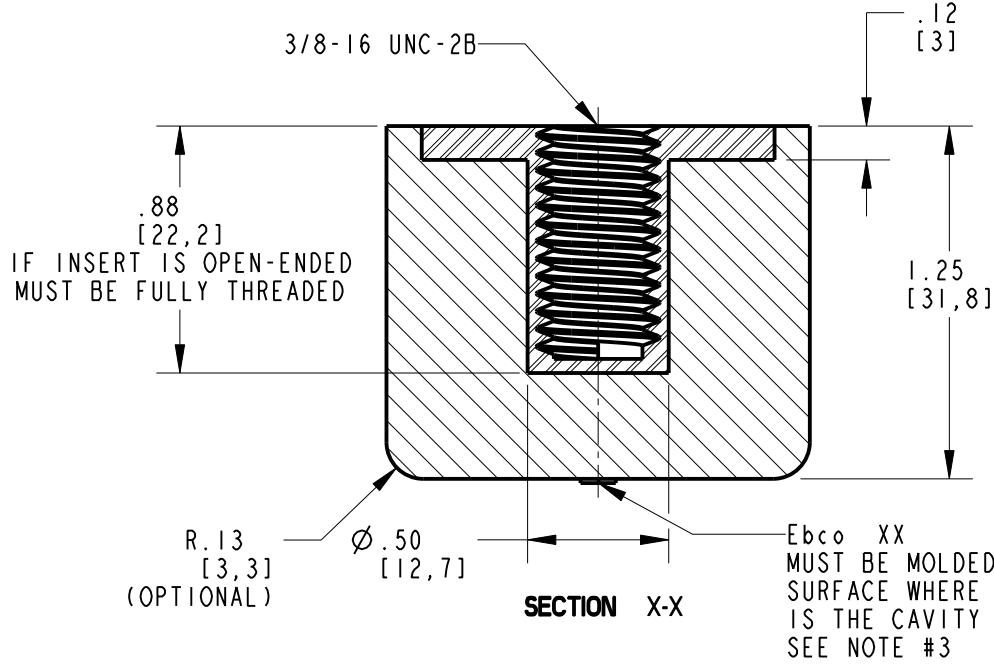
1041

DWG. NO.

REV	DATE	CHANGE DESCRIPTION	ENGR
01	05-18-05	INITIAL RELEASE	FA
02	05-26-05	REVISED DIMS, SEE 01 FOR DETAILS	FA
03	04-04-07	UPDATED FORMAT	EL



SCALE 1.000



1371 Brummel Ave.
Elk Grove Village,
IL 60007-2108

DESIGNED BY: FA	MANUFACTURING DRAWING		
DATE: 05-18-05	DO NOT SCALE THIS DRAWING	THIRD ANGLE PROJECTION	
REV. 03	NOTICE: THIS DRAWING CONTAINS PROPRIETARY INFORMATION AND MAY NOT BE USED FOR ANY OTHER PURPOSE THAN AS AUTHORIZED BY EBEO.		
TITLE: BUMPER, FEMALE INSERT	DWG NO. 1041	DWG SIZE A	UNITS INCH [MM]
TOLERANCES .XX=±.02 .XXX=±.010 ANG=±1°	SHEET 1 of 2	SCALE 1.500	

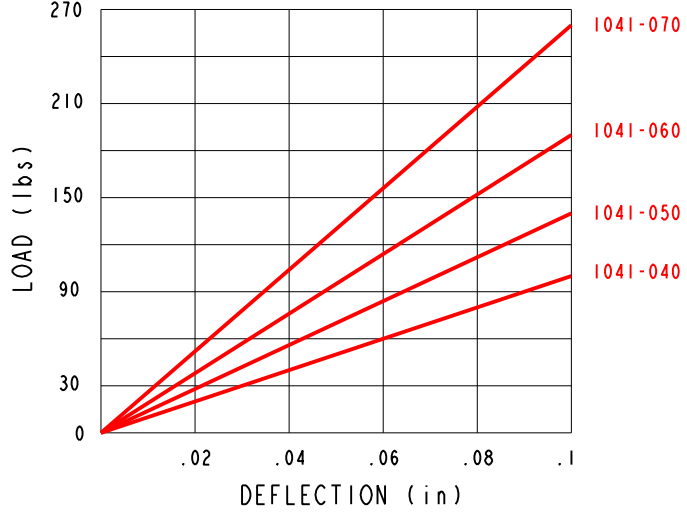
1041

DWG. NO.

COMPRESSION SPECIFICATIONS

PART NO.	K VALUE (lbs/in)	MAX. RECOMMENDED DEFLECTION (in)	LOAD @ MAX. DEFLECTION (lbs)
1041-040	1000	0.1	100
1041-050	1400	0.1	140
1041-060	1900	0.1	190
1041-070	2600	0.1	260

DEFLECTION GRAPH



REV	DATE	CHANGE DESCRIPTION	ENGR
01	05-18-05	INITIAL RELEASE	FA
02	05-26-05	REVISED DIMS, SEE 01 FOR DETAILS	FA
03	04-04-07	UPDATED FORMAT	EL

ELASTOMER AND COLOR CODE SPECIFICATIONS

PART NO.	ELASTOMER	COLOR CODE	COLOR CODE METHOD
1041-040	0	NONE	N/A
1041-050	0	NONE	N/A
1041-060	0	NONE	N/A
1041-070	0	NONE	N/A

NOTES:

- MATERIAL:
ELASTOMER #0: NEOPRENE IN ACCORDANCE WITH ASTM D2000.
3 BC X14 A14 B14 C12 F17 K11 Z, WHERE X= REFERENCE DUROMETER TYPE "A", SEE P/N AND Z= SUFFIX REQUIREMENTS APPLICABLE TO ONLY AVAILABLE DUROMETERS OF THIS GRADE.
METAL INSERT: MUST BE GRADE 5, 120 Kpsi TENSILE STRENGTH AND 25-34 HRC.
- PLATING: STEEL INSERTS MUST BE PLATED ZINC (0.00015/0.0003" THICK MIN) AND YELLOW DICHROMATE TO WITHSTAND AT LEAST 96 HOURS OF SALT SPRAY TO RED RUST WHEN TESTED PER ASTM D117.
- MOLDED TEXT TO BE 0.125" HIGH, ASPECT RATIO=1.00 RAISED.
- DIMENSIONING AND TOLERANCING PER ASME Y14.5M-1994 STANDARD.



DESIGNED BY: FA	MANUFACTURING DRAWING		
DATE: 05-18-05	DO NOT SCALE THIS DRAWING	THIRD ANGLE PROJECTION	
REV. 03	NOTICE: THIS DRAWING CONTAINS PROPRIETARY INFORMATION AND MAY NOT BE USED FOR ANY OTHER PURPOSE THAN AS AUTHORIZED BY EBCO.		
TITLE: BUMPER, FEMALE INSERT	DWG NO. 1041	DWG SIZE A	UNITS INCH [MM]
TOLERANCES .XX±.02 .XXX±.010 ANG±1°	SHEET 2 of 2	SCALE 1.500	